

**CIV 2P, CIV 2U**  
 BY ATC

**SPEED: MAX 250 KT OR CLEAN SPEED (V<sub>FE</sub>), WHICHEVER IS HIGHER, BELOW FL100 OR AS BY ATC**

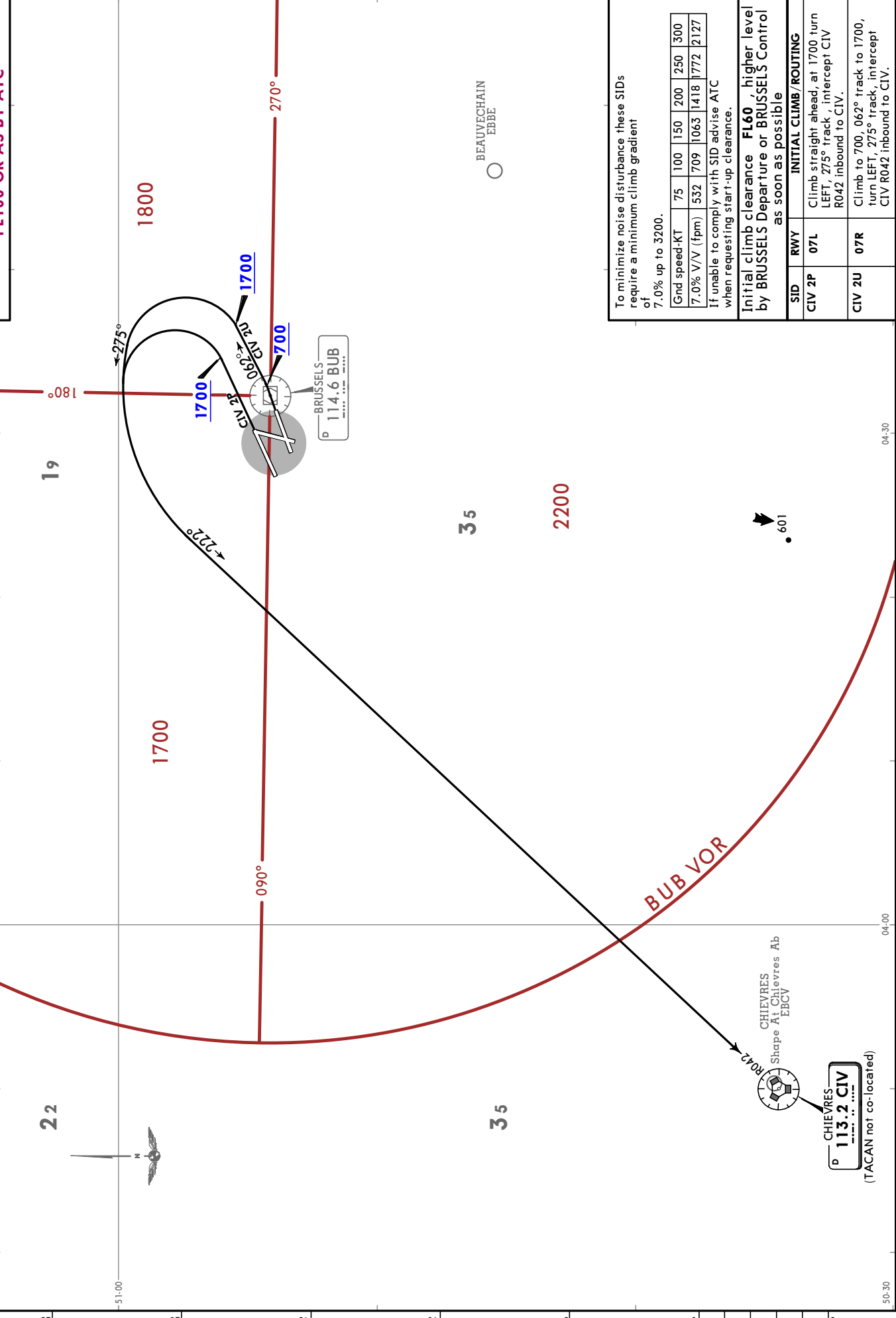
Trans alt: 4500

1. RWY 07L: EXPECT close-in obstacles.
2. After take-off remain on Tower frequency.
3. SIDs are also noise abatement procedures. Strict adherence within the limits of aircraft performance is mandatory, except when being RADAR vectored.

BRUSSELS Tower  
 118.605  
 120.780

BRUSSELS  
 Departure(R)  
 126.630

Apt Elev  
 184



To minimize noise disturbance these SIDs require a minimum climb gradient of 7.0% up to 3200.

Gnd speed-KT	75	100	150	200	250	300
7.0% V/V (fpm)	532	709	1063	1418	1772	2127

If unable to comply with SID advise ATC when requesting start-up clearance.

Initial climb clearance **FL60**, higher level by BRUSSELS Departure or BRUSSELS Control as soon as possible

SID	RWY	INITIAL CLIMB/ROUTING
CIV 2P	07L	Climb straight ahead, at 1700 turn LEFT, 275° track, intercept CIV R042 inbound to CIV.
CIV 2U	07R	Climb to 700, 062° track to 1700, turn LEFT, 275° track, intercept CIV R042 inbound to CIV.