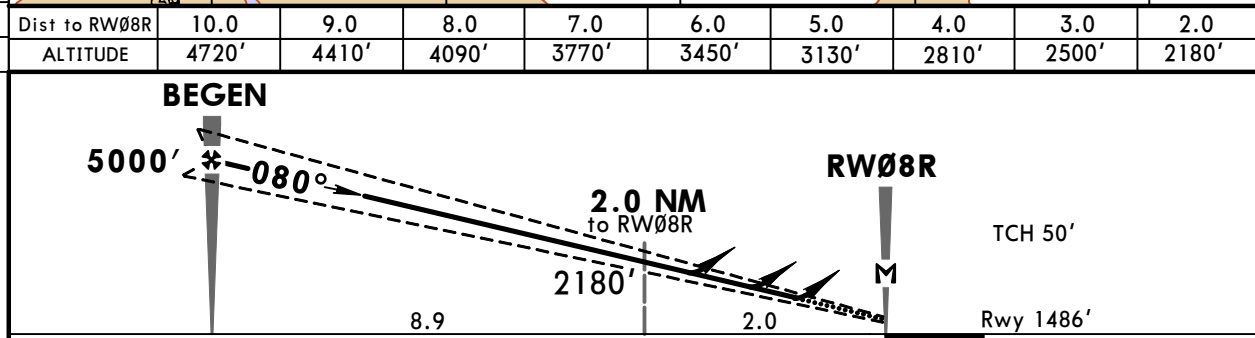
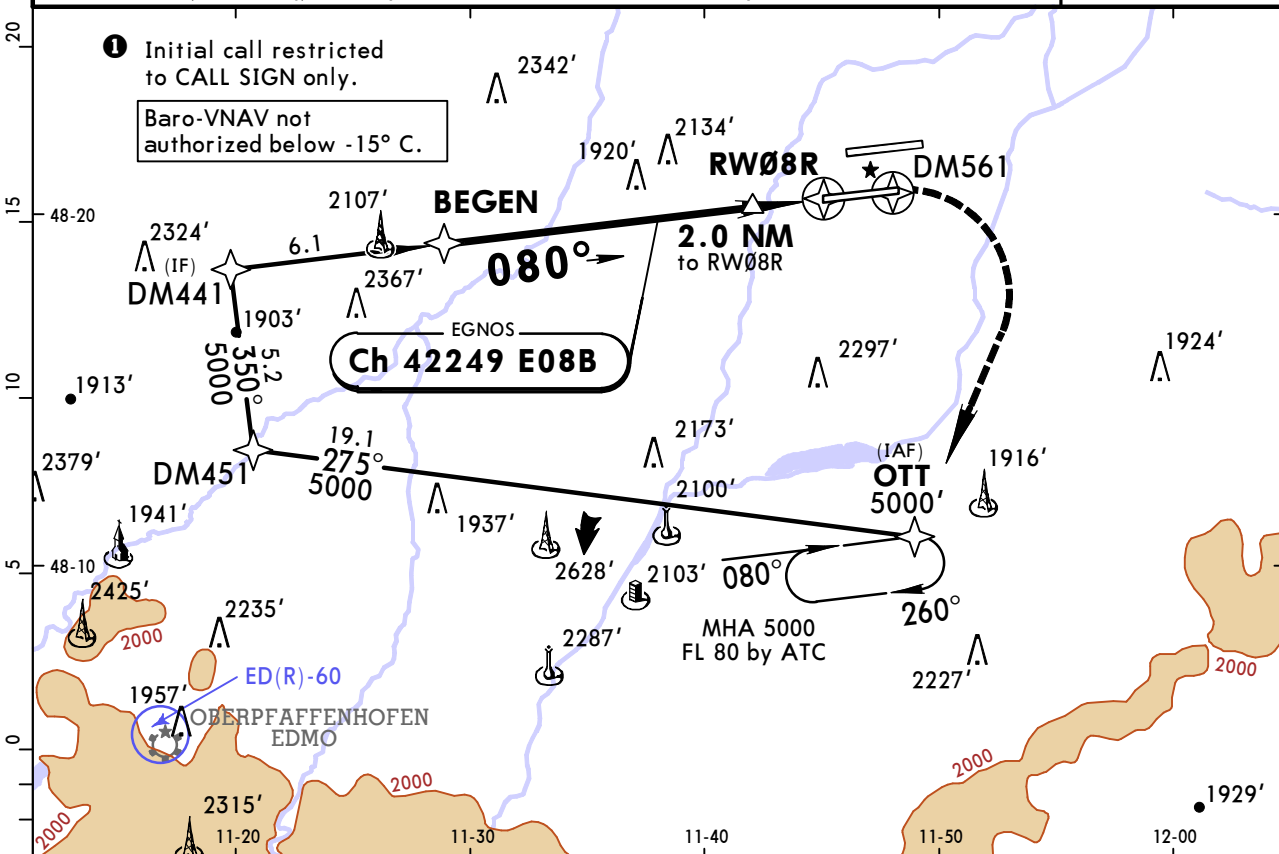


EDDM/MUC MUNICH

JEPPESEN
17 MAY 19
Eff 23 May (12-2)

MUNICH, GERMANY RNP Rwy 08R

*D-ATIS	MUNICH Arrival (APP)	MUNICH Radar (APP)	MUNICH Director ①	MUNICH Tower	Ground
123.130	120.780	127.950	132.3	120.505	121.830
EGNOS Ch 42249 E08B	Final Apch Crs 080°	Minimum Alt BEGEN 5000' (3514')	LPV DA(H) 1686' (200')	Apt Elev 1487' Rwy 1486'	4000 MSA ARP
MISSED APCH: Climb on 080° to DM561 or 1900', whichever is later, then turn RIGHT direct to OTT climbing to 5000'.					
Alt Set: hPa (IN on req) Rwy Elev: 53 hPa Trans level: By ATC Trans alt: 5000'					



Gnd speed-Kts	70	90	100	120	140	160	ALSIF-II PAPI	080°	DM561 1900'	OTT RT
Glide Path Angle	3.00°	372	478	531	637	849				
LPV, LNAV/VNAV: MAP at DA									whichever is later	
LNAV: MAP at RW08R										

Standard						STRAIGHT-IN LANDING RWY 08R					
LPV CAT I			LNAV/VNAV			LNAV CDFA					
DA(H) 1686' (200')			A: 1909' (423') C: 1925' (439')			DA/MDA(H) 2010' (524')					
TDZ or CL out			ALS out			ALS out			ALS out		
A											
B	RVR 550m	RVR 550m ①	RVR 1200m	RVR 1300m	RVR 1500m	RVR 1500m					
C					RVR 2000m	RVR 1700m			RVR 2400m		
D				RVR 1400m	RVR 2100m						
① W/o HUD/AP/FD: RVR 750m.											