

EBBR/BRU
BRUSSELS NATIONAL

JEPPESEN
9 AUG 19 (10-3G6) Eff 15 Aug

BRUSSELS, BELGIUM

SID

CIV 7J
SOUTHBOUND VIA AIRWAY M-617
SOUTHBOUND VIA AIRWAYS N-872, UN-872
(ONLY FOR TRAFFIC FLIGHTPLANNED ABOVE FL195)
COMPULSORY FOR DESTINATIONS WITHIN PARIS TMA VIA AIRWAY Y-50 SOUTHBOUND
SPEED: MAX 250 KT OR CLEAN SPEED (V_{ZF}), WHICHEVER IS HIGHER, BELOW FL100 OR AS BY ATC

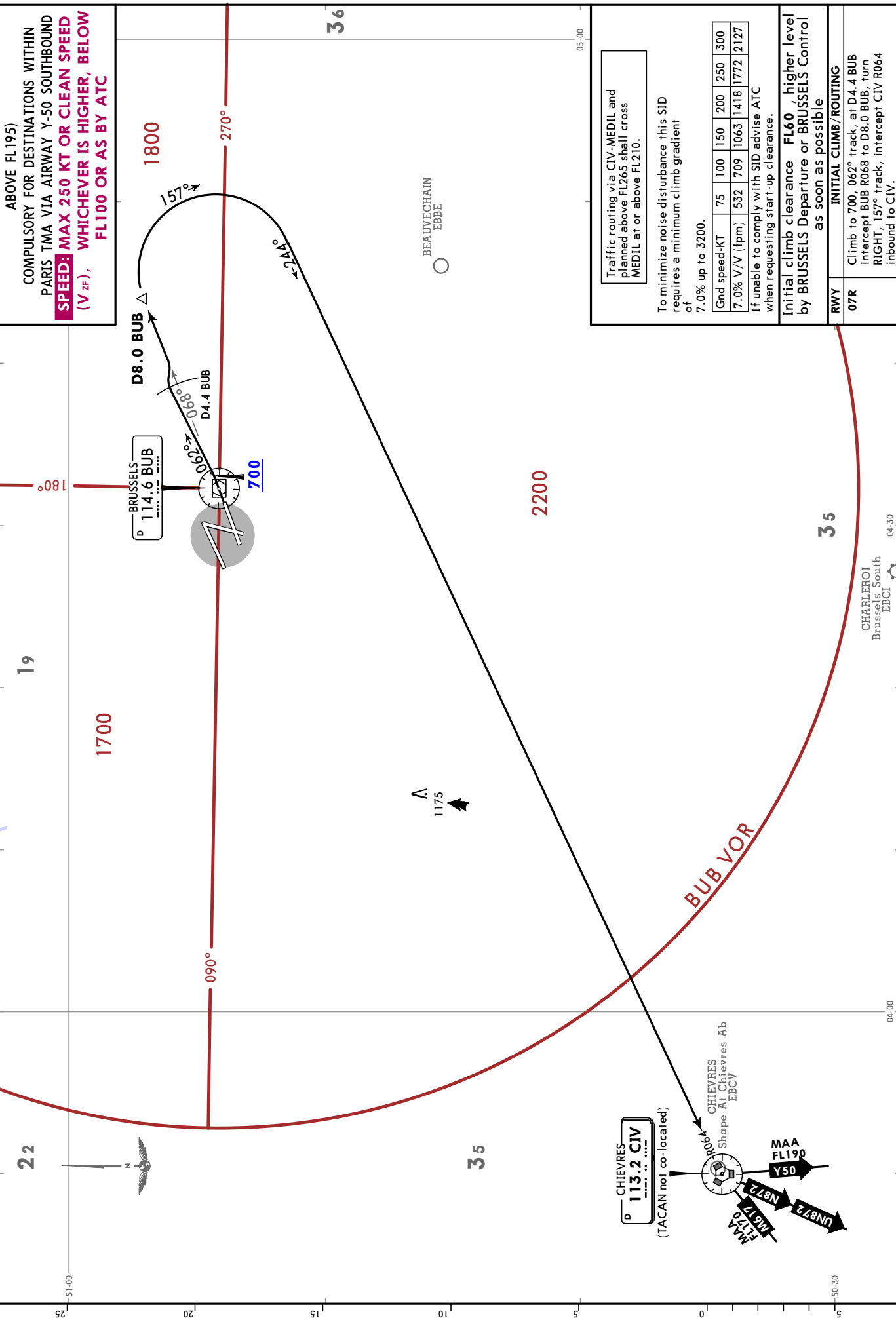
Trans alt: 4500
1. After take-off remain on Tower frequency.
2. SIDs are also noise abatement procedures. Strict adherence within the limits of aircraft performance is mandatory, except when being RADAR vectored.

BRUSSELS Tower
118.605
120.780

BRUSSELS Departure(R)
126.630

Apt Elev
184

BRUSSELS
114.6 BUB
D



Traffic routing via CIV-MEDIL and planned above FL265 shall cross MEDIL at or above FL210.

To minimize noise disturbance this SID requires a minimum climb gradient of 7.0% up to 3200.

Gnd speed-KT	75	100	150	200	250	300
7.0% V/V (fpm)	532	709	1063	1418	1772	2127

If unable to comply with SID advise ATC when requesting start-up clearance.

Initial climb clearance **FL60**, higher level by BRUSSELS Departure or BRUSSELS Control as soon as possible

RWY	INITIAL CLIMB / ROUTING
07R	Climb to 700, 062° track, at D4.4 BUB intercept BUB R068 to D8.0 BUB, turn RIGHT, 157° track, intercept CIV R064 inbound to CIV.