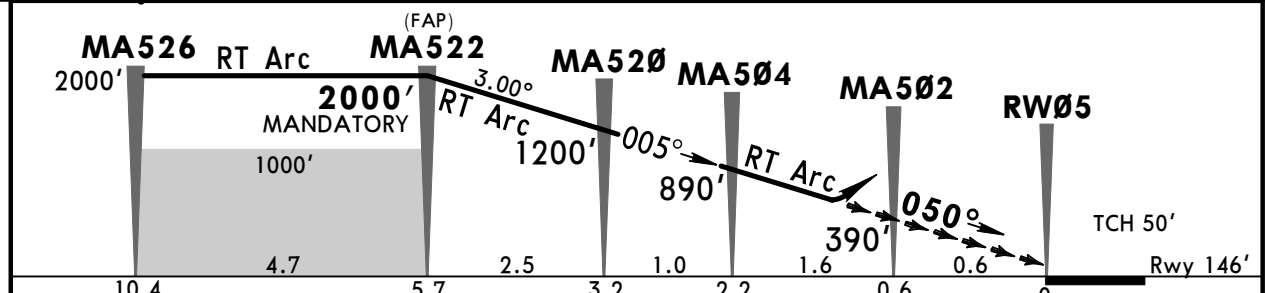
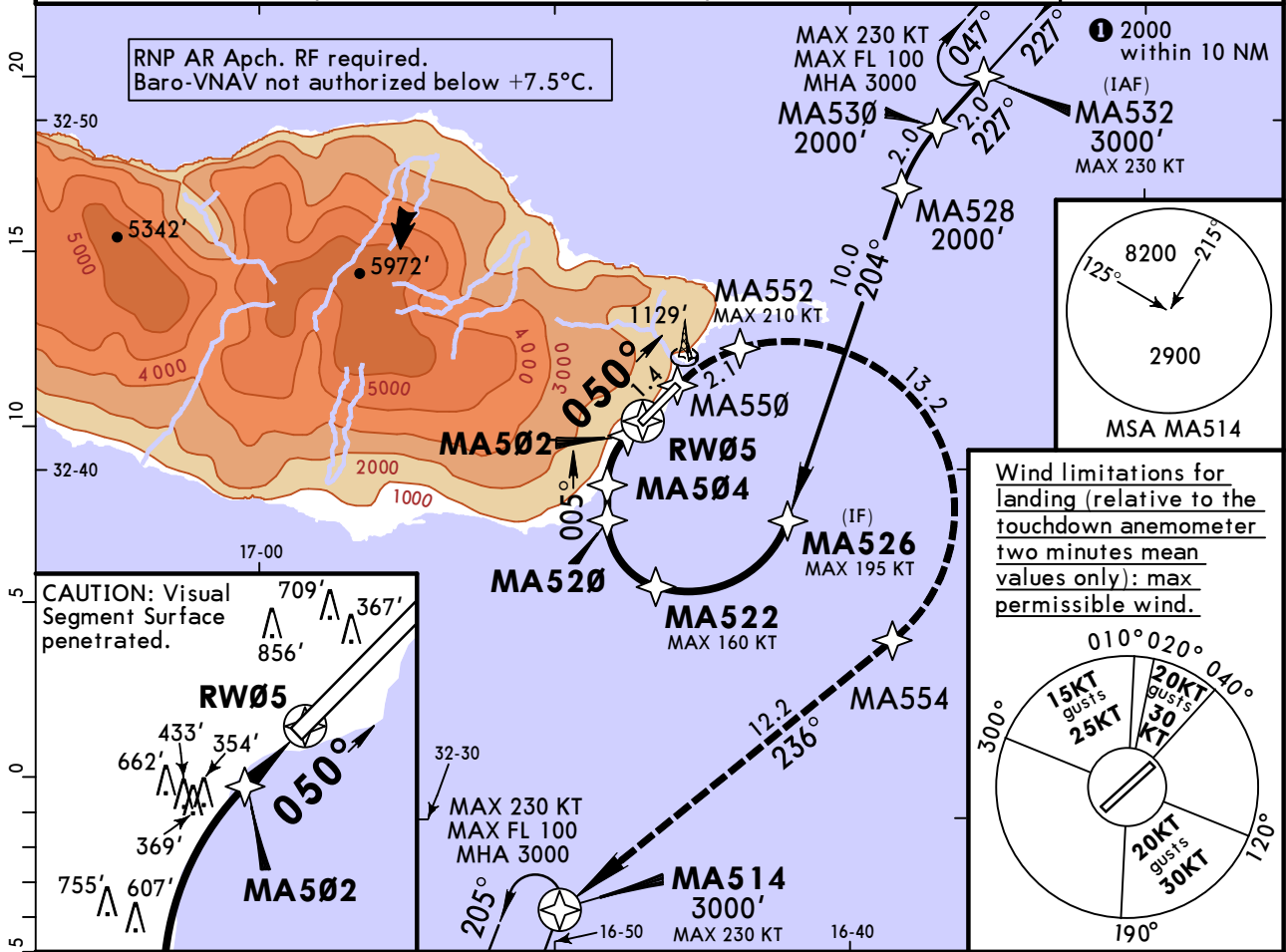


LPMA/FNC MADEIRA

JEPPESEN
27 SEP 19 **12-20** Eff 10 Oct

MADEIRA, PORTUGAL RNP Z Rwy 05 (AR)

D-ATIS 130.355		*MADEIRA Approach 119.605		MADEIRA Tower 118.355	
RNAV	Final Apch Crs 050°	Mandatory Alt MA522 2000' (1854')	RNP-0.10 DA(H) Refer to Minimums	Apt Elev 191'	Rwy 146'
MISSED APCH: Climb to 3000' to MA514 via MA550, MA552 and MA554. At MA514 join holding or as directed. MISSED APCH WITH COMM FAILURE: Squawk 7600. Climb to 3000' to MA514 via MA550, MA552 and MA554. At MA514 join holding to make one complete holding pattern at 3000', then perform RNP Y Rwy 05 approach.					<p>MSA MA532</p>
Alt Set: hPa		Rwy Elev: 5 hPa	Trans level: By ATC		Trans alt: 5000'



Gnd speed-Kts	70	90	100	120	140	160	HIALS PAPI PAPI 3000' via MA550
Glide Path Angle	3.00°	372	478	531	637	849	
MAP at DA							

Standard			STRAIGHT-IN LANDING RWY 05				
RNP-0.10 (required until MA552) DA(H) A: 500' (354') BC: 520' (374') D: 530' (384')		ALS out	RNP-0.20 (required until MA552) DA(H) A: 800' (654') C: 820' (674') B: 810' (664') D: 830' (684')		ALS out	RNP-0.30 DA(H) A: 890' (744') C: 910' (764') B: 900' (754') D: 920' (774')	ALS out

PANS OPS	A	RVR 1500m	RVR 1500m	RVR 1500m
	B	RVR 1700m	RVR 2400m	RVR 2400m
	C	RVR 1800m		
	D			